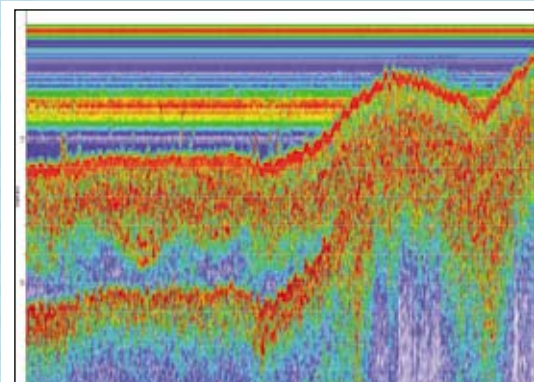


## High-Performance Sub-Bottom Profiler for ASVs, ROVs and Shallow Water

The SUBPRO 2545's multi-frequency capabilities result in efficient survey & extra-ordinary results. So the settings can be adapted to specific applications. For example, soft sediment, sediment transport, upper layers of sediment applications. Additionally, the high resolution capability of the system enables an outstanding detection of embedded objects. Optional additional receiver for even higher spatial resolution and ultra shallow water surveys (starting at 0.25m).



35 kHz, very shallow water from 0.4 m



### Advantages:

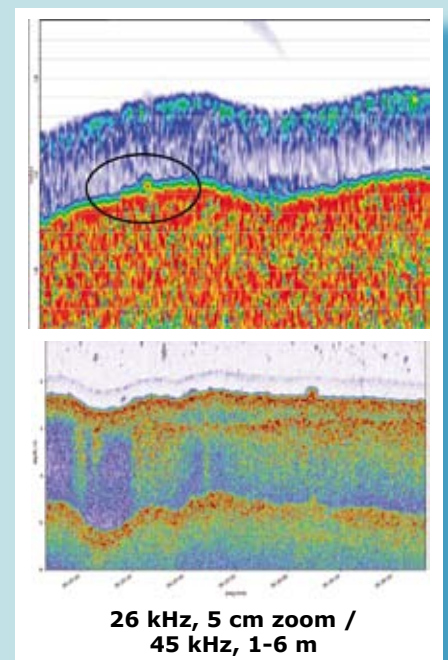
- Very compact size and low weight of system & transducer. The only system suitable for small vessels, ASVs, ROVs and remote controlled vessels with small space or payload.
- Energy efficient operation for optimized battery size at autonomous survey platforms
- Complete measuring system and easy to integrate in survey systems.
- Suitable for all sizes of survey-vessels or ships as a portable or in-hull mounted system.
- Fulfills most sub bottom surveying tasks in only one system.

### Note:

**General Acoustics can provide the SUBPRO2545 integrated in various ASV and other vessels. Speak to us about your measurement goals and we can suggest a suitable platform including remote control, positioning and communications systems.**

### System components include:

- One high quality, narrow beam, broad band transducer 25 to 45 kHz for in-hull installation or over-the-side operation.
- SUBPRO-System in IP65 housing (optional 19" housing for 230VAC version).
- Integrated controller for triggering, transmitting, receiving, amplifying and processing of signals, ppsmodule for time synchronisation, power supply. System control and realtime processing
- graphic display via external or in-boat PC (not included).
- User friendly Windows Operating Software SUBPRO-Studio incl. raw data logging and real time post/re-processing.
- Transducer cable.

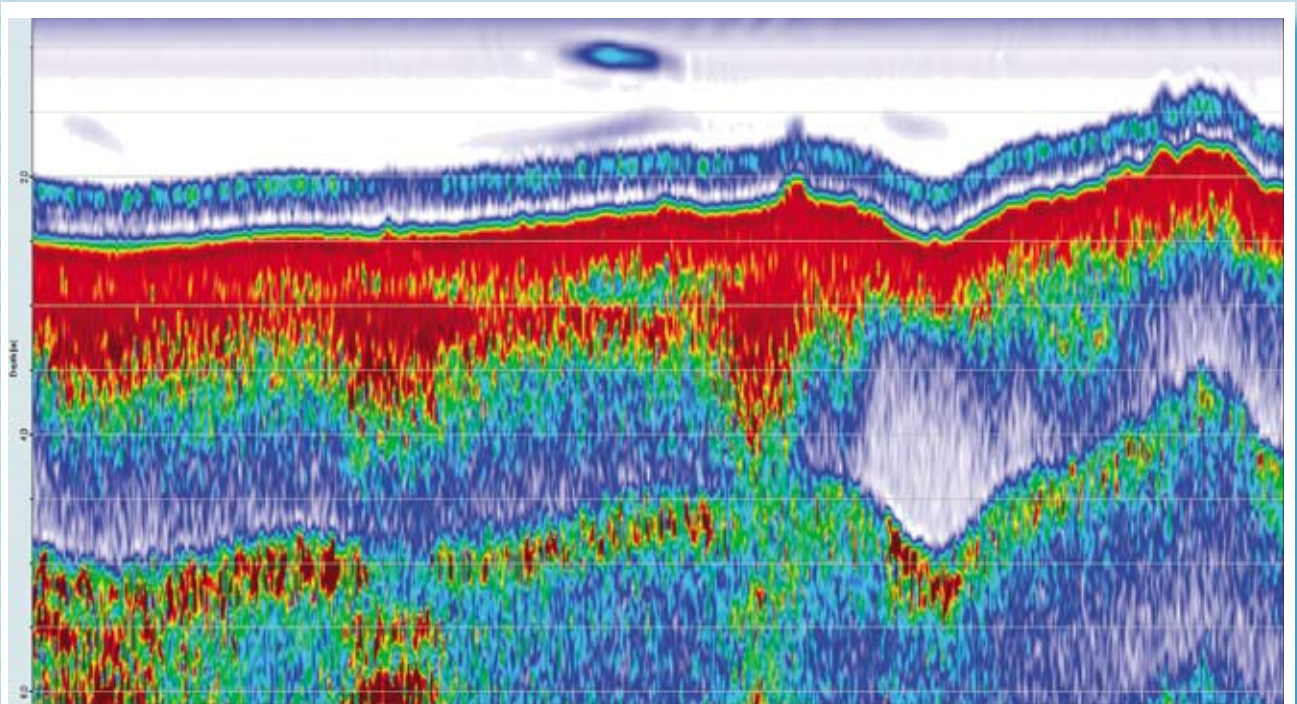


26 kHz, 5 cm zoom /  
45 kHz, 1-6 m

# SUBPRO 2545 Sub-Bottom Profiler



Best in Class Resolution and Sediment Penetration  
for Shallow and Ultra Shallow Waters



45 kHz Echogram 0 to 6 m

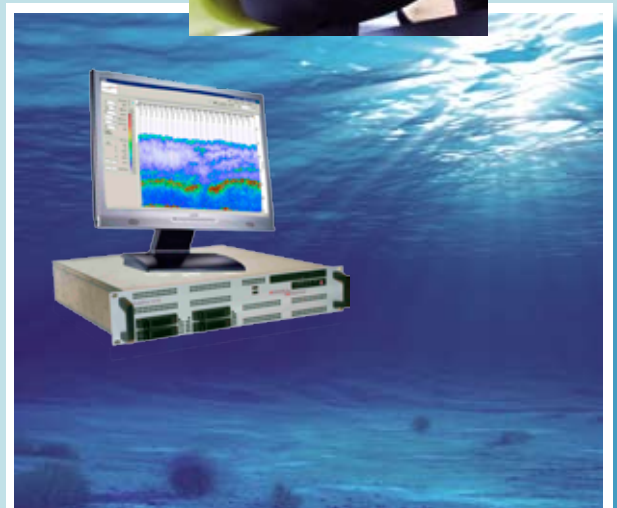
## Specifications:

### System:

- For ultra shallow water survey starting at 0.25 m water depth
- Frequency: 25 to 45 kHz
- Transmit Power: up to 2 KW peak (optionally 4 kW peak)
- Ping duration/ -rate: 80  $\mu$ s to 1 ms / up to 20 Hz
- Dynamic Range: 160 dB
- Technical internal resolution: 1 mm (24 bit)
- Vertical resolution: < 5 cm (depends on setting)
- Penetration: more than 15 m (depending on material and system setting)
- Power Supply: 24 VDC (optional 230 VAC - only in 19" housing)
- Power consumption: 60 W
- Controller dimensions (LxWxH): 33x23x15 cm
- Controller weight: 8.5 kg
- SUBPRO-Studio software: Windows compatible, raw data logging and real time postprocessing and re-processing. Data conversion to SEG-Y (Hypack ready). GPS (NMEA) input.

### Transducer:

- Broadband, 25 to 45 kHz, narrow beam
- Beam Angle: 9° at 25kHz, 6° at 45 kHz ( $\varnothing$ 20 cm)  
7° at 25 kHz, 4.5° at 45 kHz ( $\varnothing$  26cm)
- Size (dxh): 20x15 cm (optional 26x14cm)
- Weight: 8 kg (15 kg for  $\varnothing$  26 cm)
- Cable Length: 1m (longer on request)
- Optional separate receiver dimensions (LxWxH): 10 x 10 x 2 cm



SUBPRO 2545 Transducer

Representative of General Acoustics:

### General Acoustics e.K.

Am Kiel-Kanal 1  
24106 Kiel / Germany  
Phone: +49 431 5 80 81 80  
info@GeneralAcoustics.com  
www.GeneralAcoustics.com

SUBPRO 2545